

Configuring a Network Database in Your Office for MyoVision

Last Modified on 07/06/2018 11:12 am PDT

Table of Contents:

- [Summary](#)
- [Step 1: Make a Backup of Your Database](#) - This step will guiding you through creating a backup of your current patient database.
- [Step 2: Install Software](#) - This step will guide you through installing the MyoVision software. If you already have the MyoVision software installed you do not need to do this step.
- [Step 3: Migrate to SQL Server 2014](#) - In this step you will check to make sure that you are running SQL Server 2014. If you are not running SQL Server 2014, this step will also show you how to upgrade to SQL Server 2014. **You only need to do this step if you currently have MyoVision installed on your computer.**
- [Step 4: Setup Firewall](#) - In this step you will setup the firewall, on the computer that you want to host the data on the network database.
- [Step 5: Final Server Setup](#) - In this step you will setup the computer that you want to host the data so that the "workstation" computers can access the MyoVision database.
- [Step 6: Setup Workstation Computers](#) - In this step you will setup the workstation computers so that they connect to the network database.

Summary:

[Return to Table of Contents](#)

This article will walk you through the necessary steps to setup a networked database for your MyoVision software. A networked database will allow you to access the database of patients and exams on any computer running MyoVision, connected to your network.

- *It is **crucial** that you backup your patient database before continuing with setting up your networked database.*
- *You must have Administrative access to the server computer and workstations in order to setup a networked database.*

When creating a network database one computer will be used as the

Master computer that stores data (a network database has one computer that stores data and other computers that store data and receive data from the **Master**). Each computer that connects to the **Master** or **Server** computer will be designated as a **Remote** or **Client** computer.

Step 1: Make a Backup of Your Database

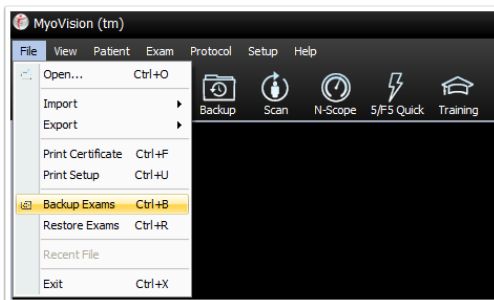
[Return to Table of Contents](#)

It is crucial that you follow these steps to backup your patient database within the software as well as backup the raw database files to properly restore your exams once the networked database has been setup.

If you need to merge patient databases [click here](#).

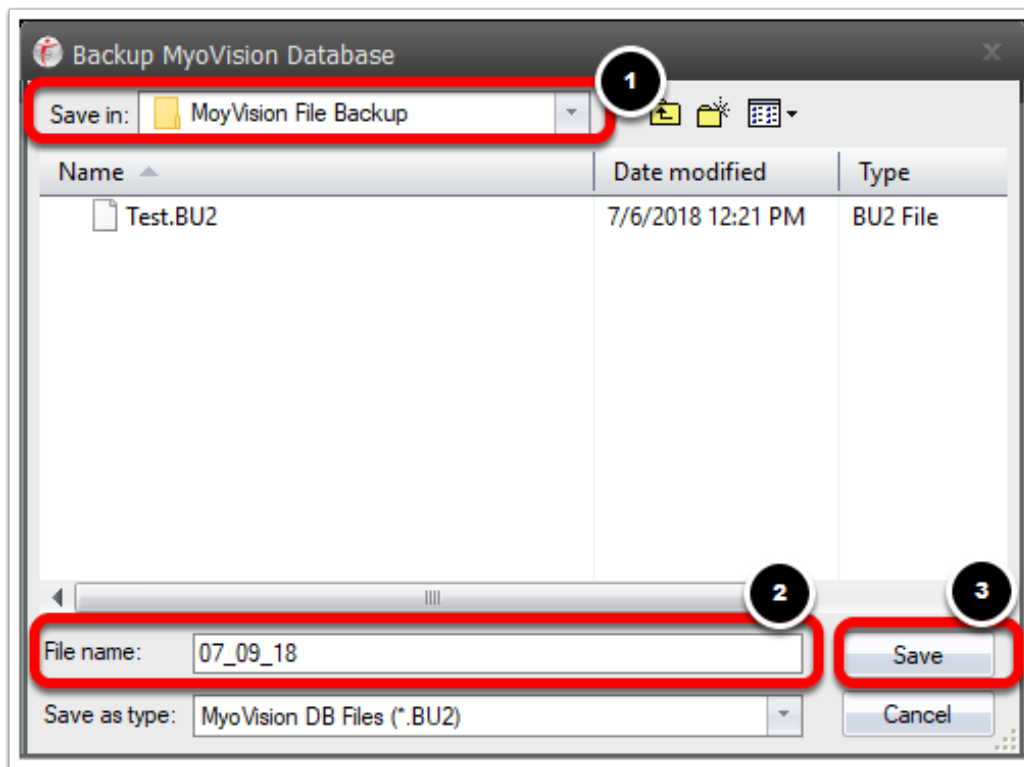
Use this method to create a copy of your MyoVision database using the built-in backup feature. When you create a database backup, the MyoVision software takes all of your patient and exam data and compresses it into a single file. These files are typically fairly small in size.

1. To begin making a backup: select **File** then **Backup Exams**.

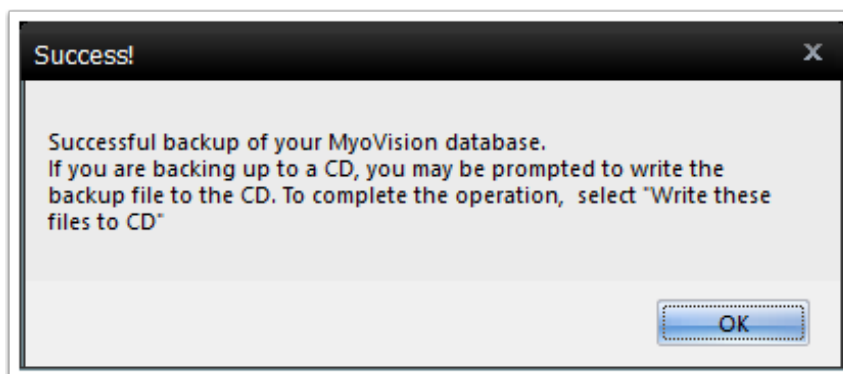


2. A popup will appear. Select: **(1)** Where you want to save your backup to **(2)** Name your backup file, **(3)** Click **Save** to create the backup.

TIP: include the date the backup was created in the File Name. This will make it easier to recognize when the backup was created.



3. You will receive the following "Success!" message if your backup was completed properly.



Once you have successfully created your backup file, you can transfer it to an external location such as a flash drive, external hard drive, another computer, or a server.

Your browser does not support HTML5 video.

Step 2: Install Software

[Return to Table of Contents](#)

In this next step we are going to be installing the MyoVision software on your workstation computers and on your server computer. If you already have MyoVision installed on your computers you can move to Step 3: Migrate to SQL Server 2014

[2.1 Download and Run](#)

[2.2 Enable Remote
Data](#)

[Tutorial Video](#)

Step 3: Migrate to SQL Server 2014

[Return to Table of Contents](#)

In order for your database to function properly the *SERVER* must be running **Microsoft SQL Server 2014**. If you did a fresh install of the MyoVision software on the server computer than Microsoft SQL Server 2014 is already installed. However if you were updating from a previous version you might still be running Microsoft **SQL Server 2008 R2**. Generally speaking if the SQL Server is called **SQLEXPRESS** you are running Microsoft **SQL Server 2008 R2**. If the SQL Server is called **PBI_MYOVISION** you are running SQL Server 2014.

| | |
|---------------------------------|--------------------|
| 3.1 Verify Current SQL Version | 3.2 Run Setup File |
| 3.3 Install New SQL Server 2014 | Video Tutorial |

Step 4: Setup Firewall (SERVER COMPUTER ONLY)

[Return to Table of Contents](#)

This step allows the SQL Server to communicate through the server computer's firewall.

| | |
|----------------------------------|-----------------------|
| 4.1 Navigate to Windows Firewall | 4.2 Create a New Rule |
| Tutorial Video | |

Step 5: Final Server Setup:

[Return to Table of Contents](#)

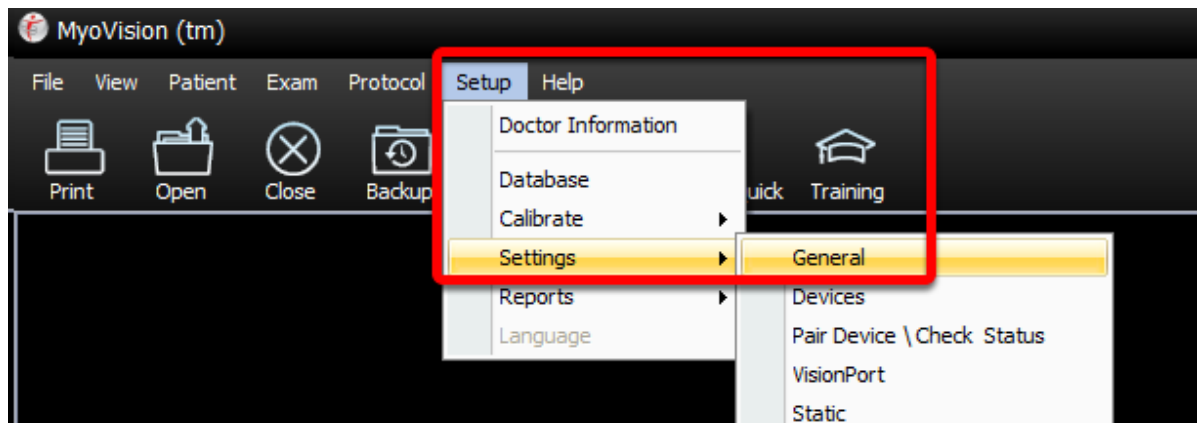
In this step we will be finishing the setup of the networked server, by adjusting the TCP/IP settings and **Permissions**.

Step 6: Setup Workstation Computers

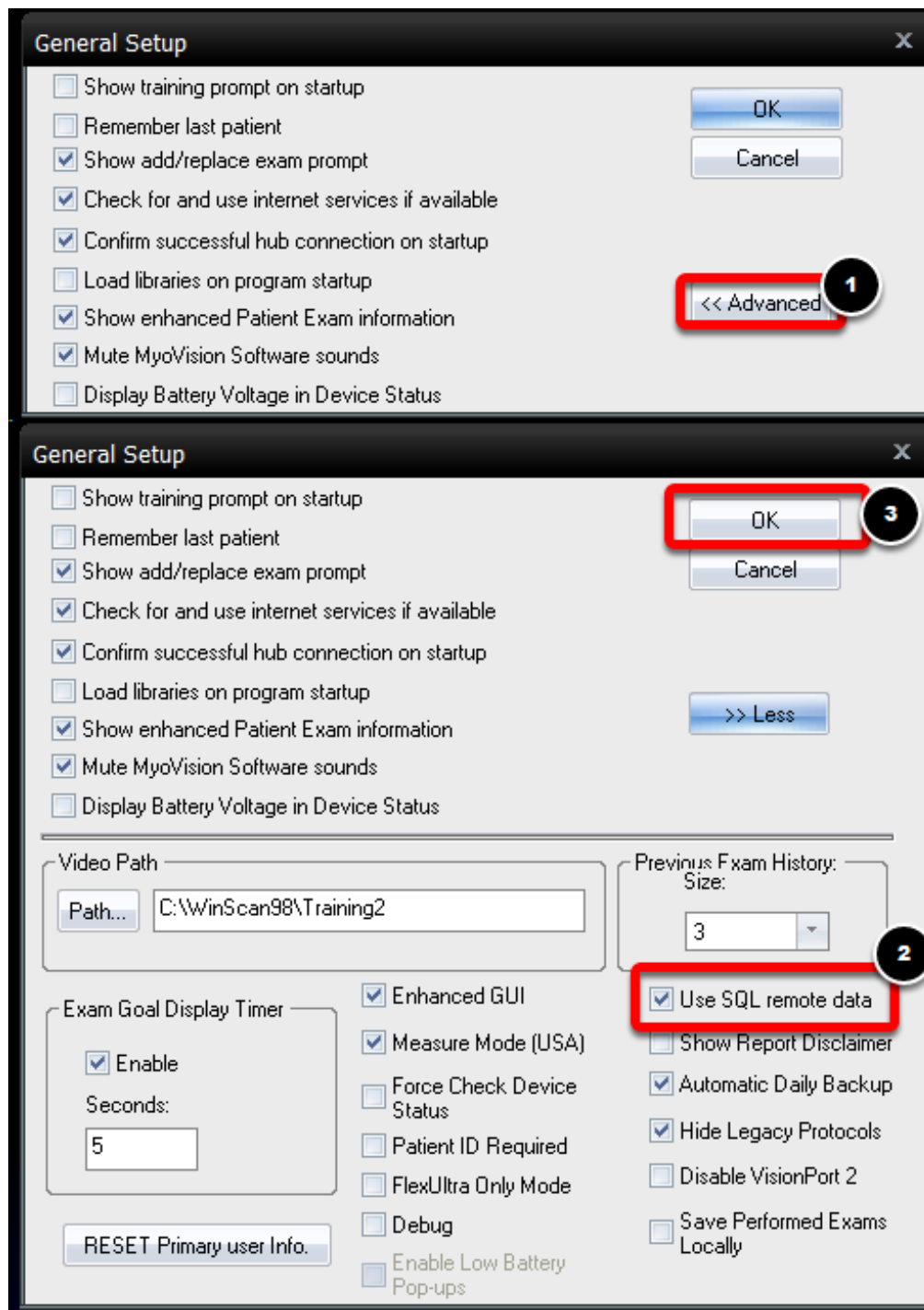
[Return to Table of Contents](#)

Now that your server is setup and broadcasting the final step will be to check and make sure that it's broadcasting to your workstation computers and can successfully connect.

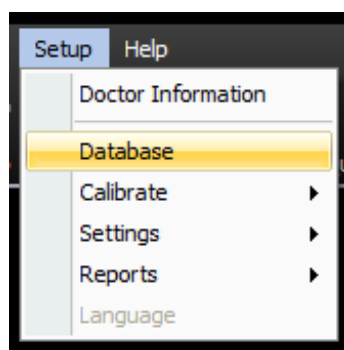
1. Open the **Setup** menu from the top menu bar, go down to **Settings**, and select **General**.



2. When the **General Settings** window opens, click the **Advanced** button to view the **Advanced** option. Then, make sure the **Use SQL remote data**. Click OK to save the setting.



3. On the Client (Workstation) Computers, open the MyoVision software, open the Setup menu, and select Database.

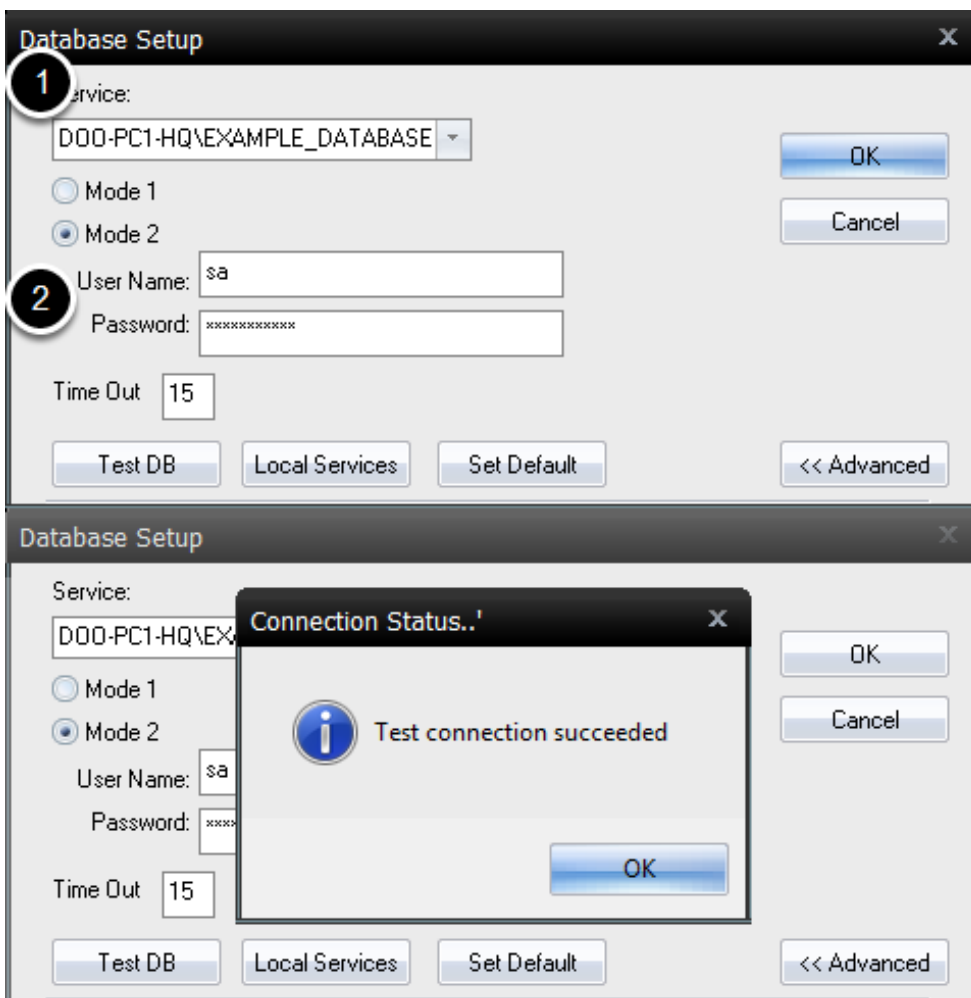


4. In the window for Service type in the address to the SQL server instance on the server. It will be `SERVER\PBI_MYOVISION` where SERVER is the name of your server.

Select Mode 2 and fill in the login information

- User Name : sa
- Password: MyoVision01

Once the information is entered click on Test DB. If successful you will get Test connection succeeded.



[Return to Table of Contents](#)