

# Configuring Your MyoVision Software for Single or Dual Scanners

Last Modified on 07/06/2018 10:02 am PDT

## Summary

This document shows you how to configure the MyoVision software to use one ScanVision or two.

## Before you Begin

1. Make sure you have the latest version of the MyoVision software. Download here:

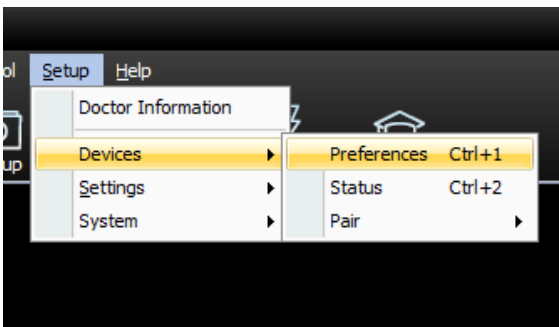
<https://www.myovision.com/download>

- [How Do I Check My Software Version?](#)

## How to Configure MyoVision for Single or Dual Scanners

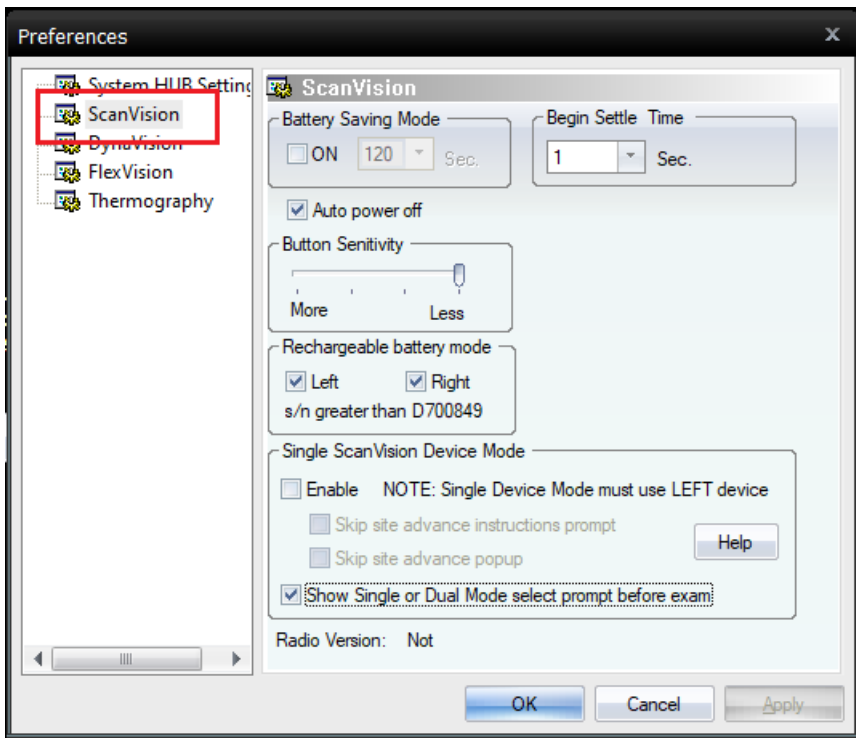
### 1. Go to Preferences Menu

- In the MyoVision software, click on **Setup -> Devices -> Preferences**
- If your menu shows different options than the image below, you will need to [download the latest version](#) of the MyoVision software.



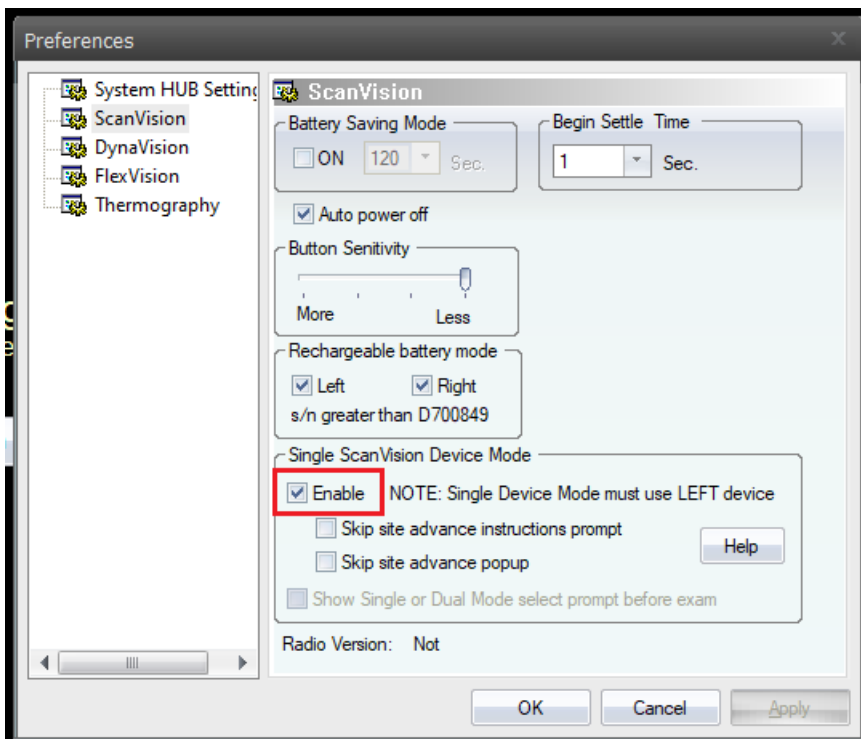
### 2. Select ScanVision Preferences

- Click on **ScanVision** on the left-hand side of the window.



### 3. To Enable Single ScanVision Device Mode

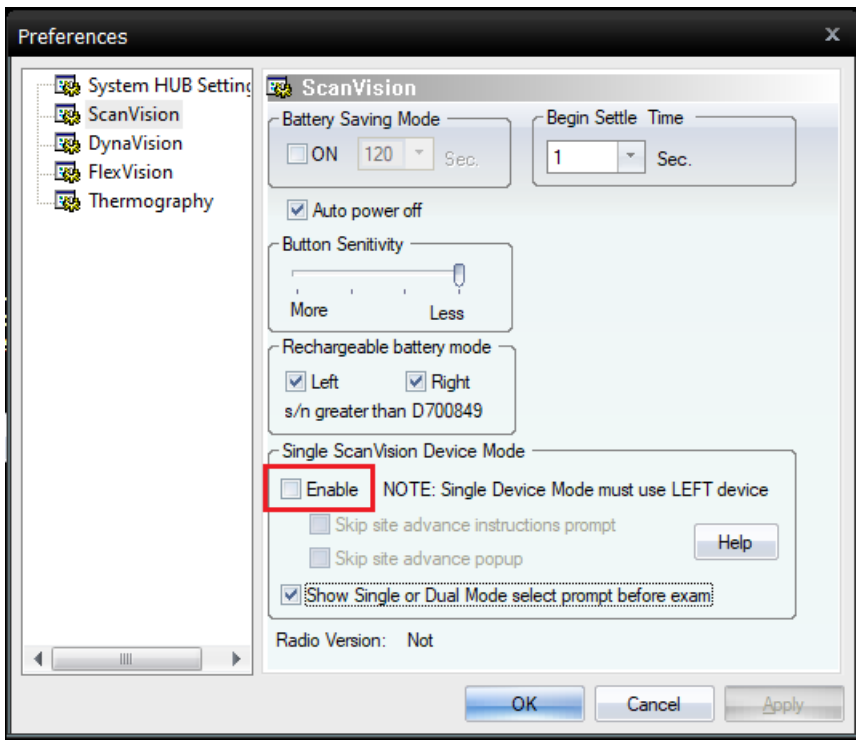
- To use a single ScanVision device, check the Enable box.



- After you check the box, a window will pop up prompting you to set the device left. Click continue.
- You will now only be able to use the "left" device.

### 4. To Enable Dual ScanVision Device Mode

- Make sure the Enable checkbox is unchecked.



## 5. Click OK to exit

Note: If the MyoVision software is not able to recognize your ScanVision(s), refer to the [ScanVision Configuration](#) article. You may need to fix your device's left and right "handedness."

---