

How to replace SERIES-5 device pairing with new device pairing

Last Modified on 01/24/2026 8:20 am PST

Summary

This document shows you how to pair your SERIES-5 (white label) handheld devices to a computer with a VisionHUB.

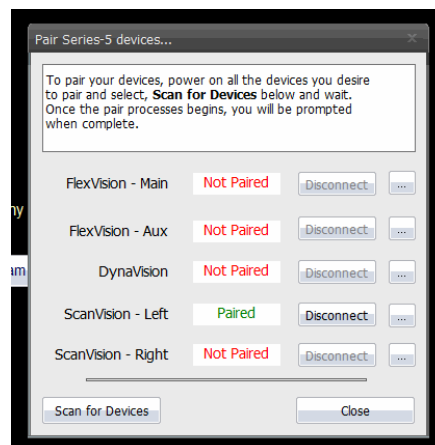
Before you begin

1. Make sure you have the latest version of the MyoVision software. Download here:
<https://www.myovision.com/download>
 - [How Do I Check My Software Version?](#)
2. Ensure the VisionHUB is plugged into the computer and have the new device nearby and the power switch in the ON position
 - Not sure where the power switch is? See our [SERIES-5 First Time Setup](#) guide for device overview

How to replace SERIES-5 device pairing with new device pairing

1. Disconnect device from the computer

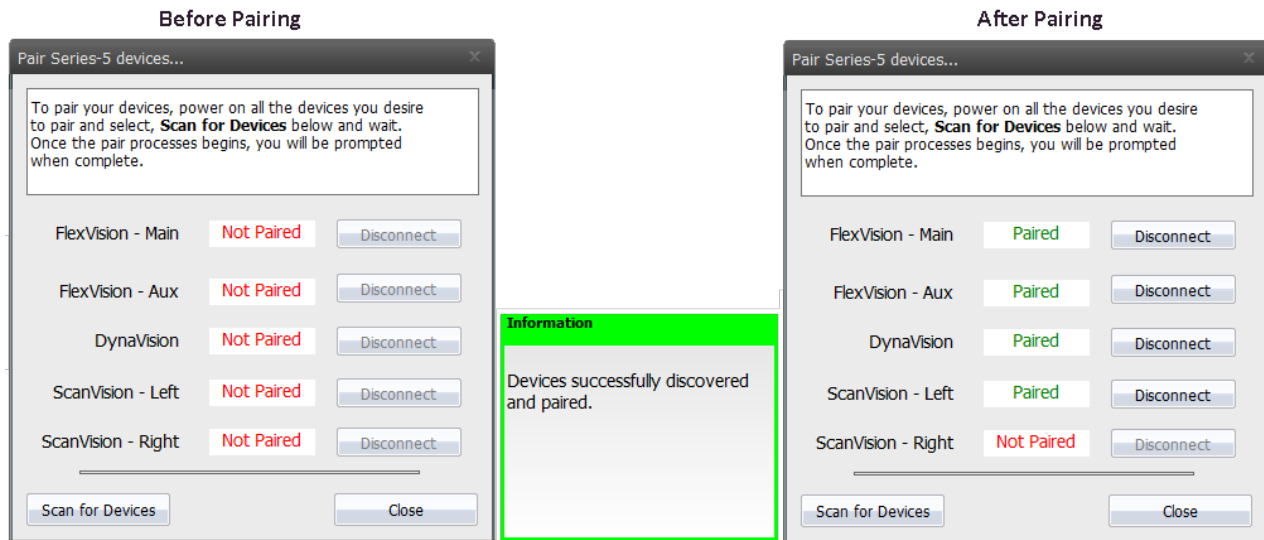
1. Open the MyoVision software, at the top of the software click **Setup > Devices > Pair > Series-5** (or press "control + 5" at the same time on your keyboard).
2. Next to the device or devices that are no longer going to be used on that computer click "Disconnect"
 - This should change the device status to "Not Paired"



2. Pair your SERIES-5 devices

1. Turn on the new device(s) you want to pair: Turn the **Power Switch** into the ON position and press the **Start Button**
2. Press "Scan for Devices" in the "Pair Series-5 devices...." window.

- This process can take a few minutes depending on your computer. Your devices will turn off one at a time as they pair.
- When the pairing process is complete, a pop-up in the lower right corner will appear and each device will say "Paired" next to it.
 - The "Paired" devices will match what devices you own.
 - If not all of the expected devices paired, turn on all the devices again by clicking the start button and click "Scan for Devices." Below is an example of a DynaROM system with a Single ScanVision.



Note: The SERIES-5 handheld devices are registered to your computer's user account, not the VisionHUB. If you change user accounts or move to a different computer you will need to go through the removal and pairing process again.